

The Bridgewater



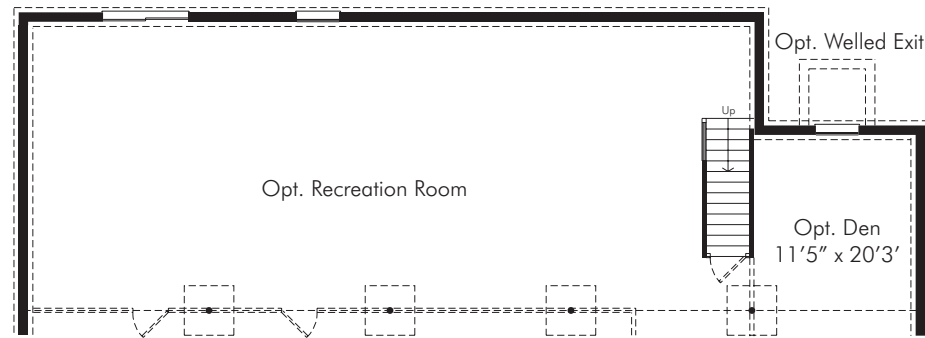
{ Elevation 3 }



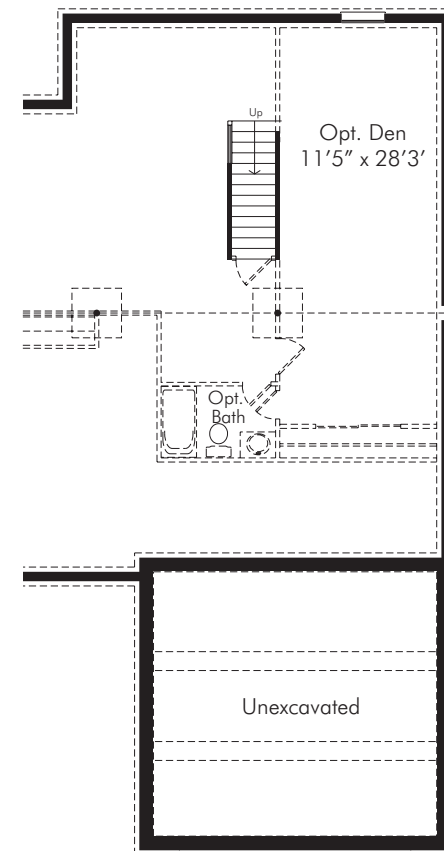
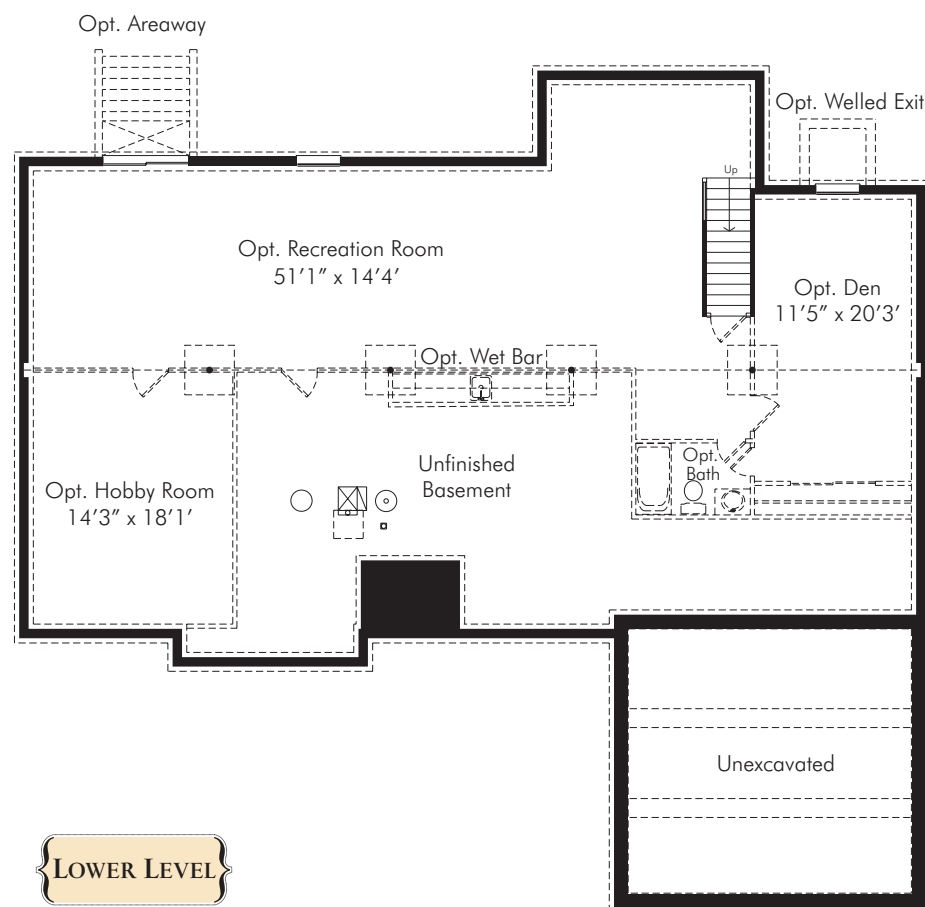
{ Elevation 2 }



{ Elevation 1 }



Optional Lower Level At Extended Great Room & Master Bedroom Elevation 1



Optional Lower Level At Extended Bedrooms 2 & 3

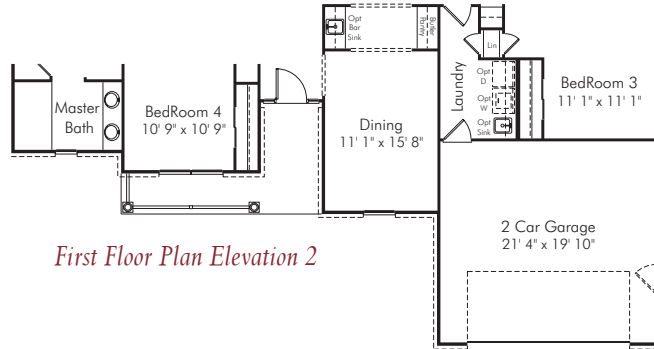
This spacious 4 bedroom 3 bath home offers main level living in an updated design. The light filled kitchen and breakfast nook join the great room in creating an open floor plan designed for family living or entertaining. The master suite features dual walk in closets and a luxury bath. Bedrooms 2 and 3 are separated by a Jack and Jill bath and Bedroom 4 has its own bath. Truly a flexible floor plan, there are options for a first floor living room in lieu of the 4th bedroom, a second master bedroom suite or a second floor loft with full bath. A 3-car front load and side load garage options are available. Basement finishing options include a finished lower level recreation room, full bath, den or hobby room. This Home starts at 2,200 sq. ft.

Atlantic Builders
GIVING YOU MORE

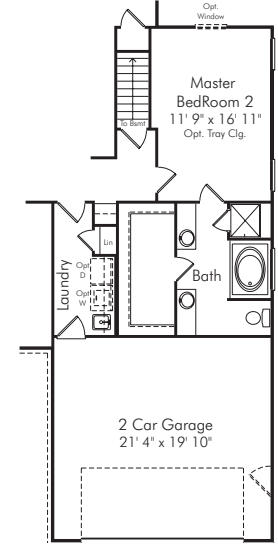


Atlantic Builders
GIVING YOU MORE

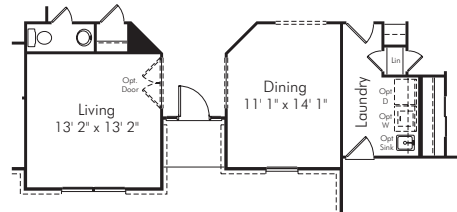
The Bridgewater



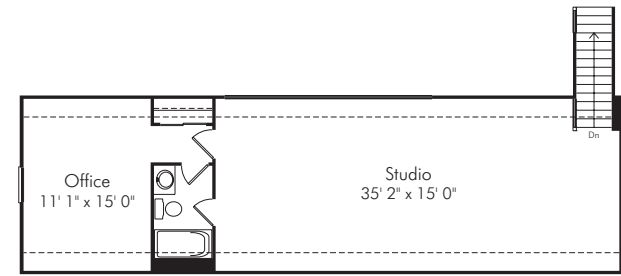
First Floor Plan Elevation 2



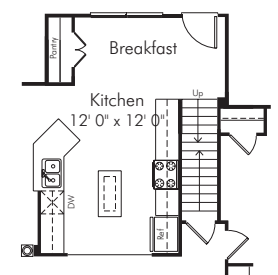
Optional First Floor At Dual Master Bed. All Elevations



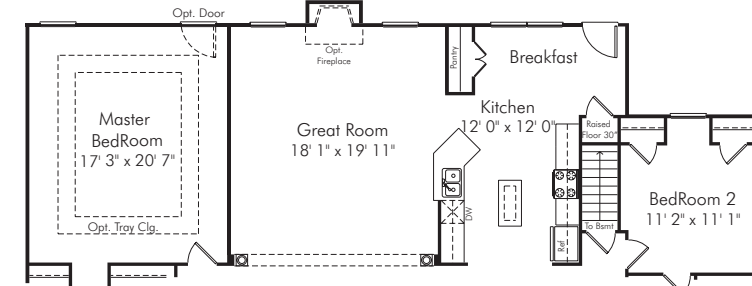
Optional First Floor At Living Room. Plan All Elevations



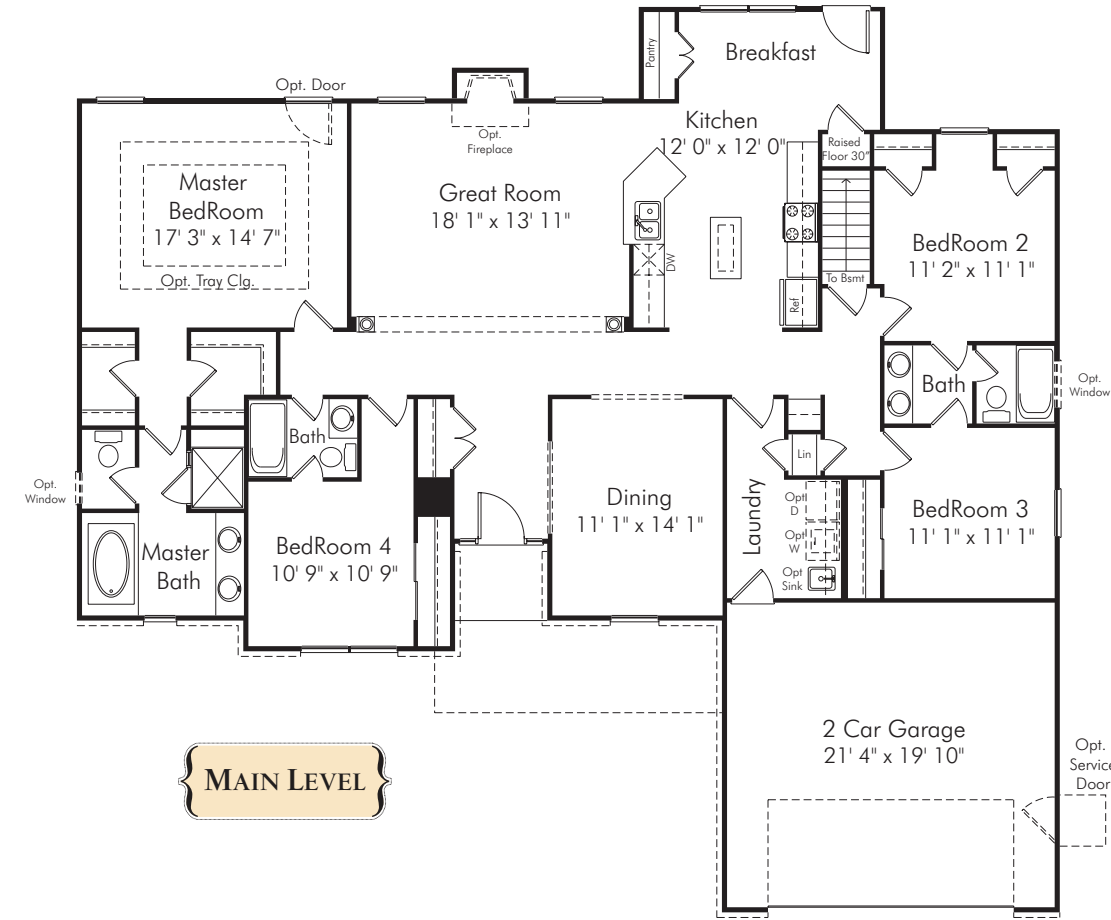
Optional Second Floor Loft



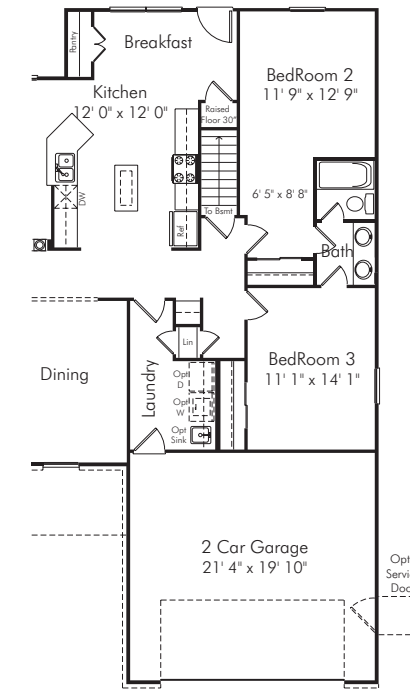
Optional First Floor with Loft Stairs



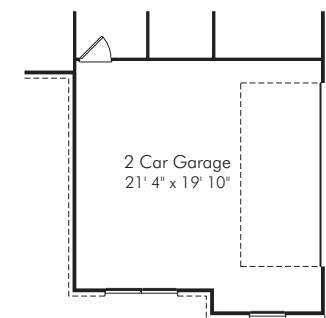
Optional First Floor Great Room & Master Bedroom Extension



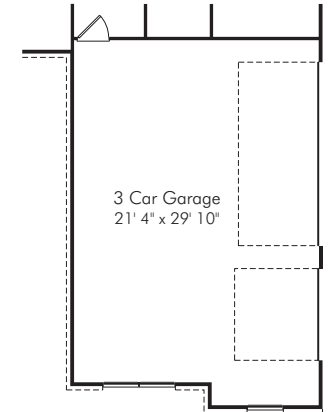
MAIN LEVEL



First Floor Plan At Extended Bedrooms 2 & 3



First Floor Plan At 2-Car Side Load Garage Elevation 1



First Floor Plan At 3-Car Side Load Garage Elevation 1

These renderings and floorplans are conceptual only. Actual details may vary. This insert is for illustrative purposes only. Atlantic Builders' continuing research and development program means specifications and plans are subject to change without notice. Standard features vary per community. Please consult Community Sales Manager for details.