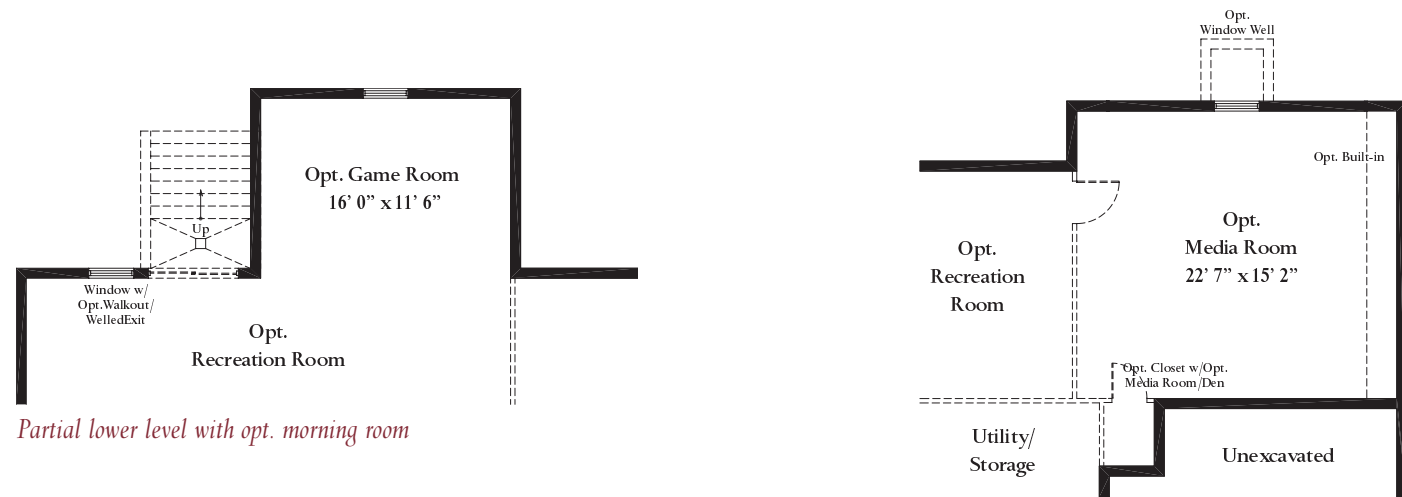
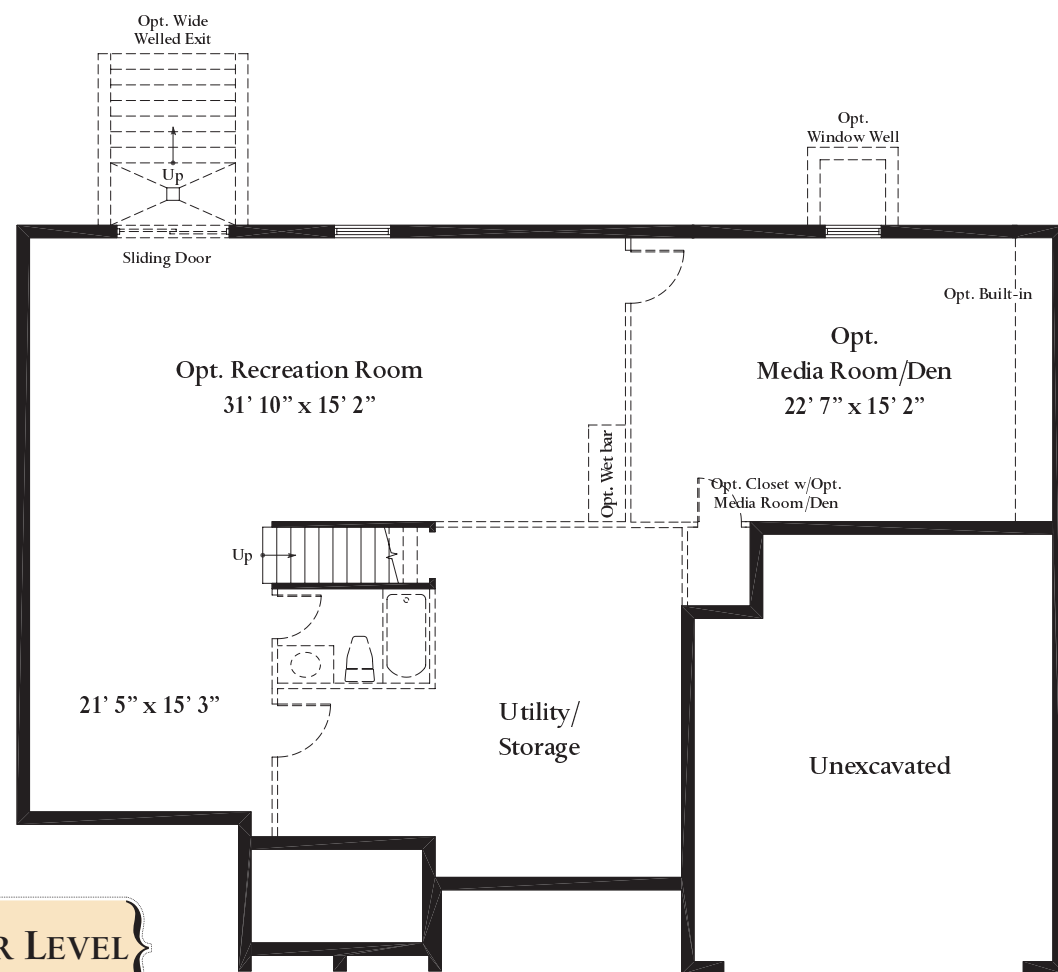


# The Chelsey



Partial lower level with opt. morning room

Partial lower level with opt. 4' 0" family room extension



LOWER LEVEL



{ Elevation 4 }



{ Elevation 2 }



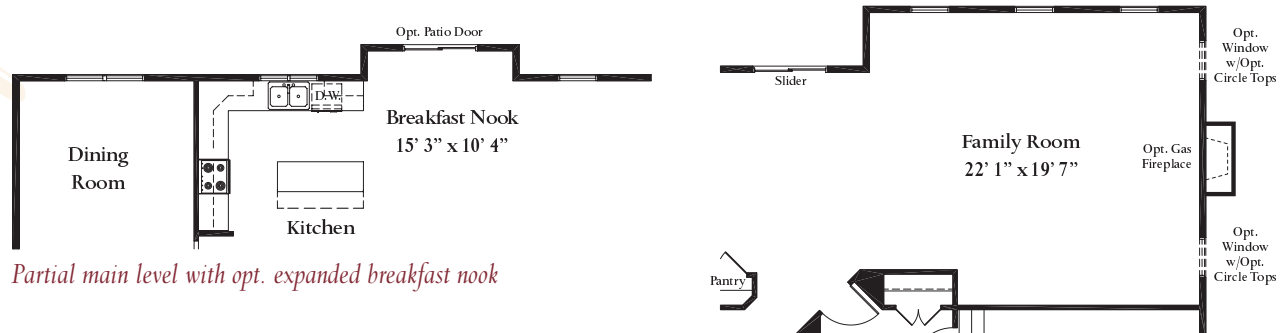
{ Elevation 3 }

You will find charm everywhere you look in The Chelsey, beginning with a sunlit 2 story foyer that introduces the main level of the home. A private library sets itself apart, while the living room flows directly into the elegant dining room. At the back of the home, the well-appointed kitchen and breakfast nook open to a spacious family room. Upstairs, the palatial owners suite features dual walk-in closets and light-filled garden bath with separate shower, soaking tub, and dual vanities.

*Atlantic Builders*  
THERE FOR YOU

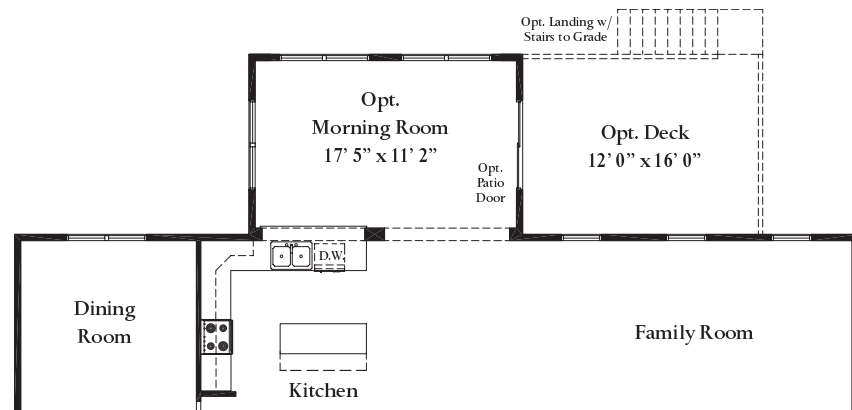


*Atlantic Builders*  
THERE FOR YOU

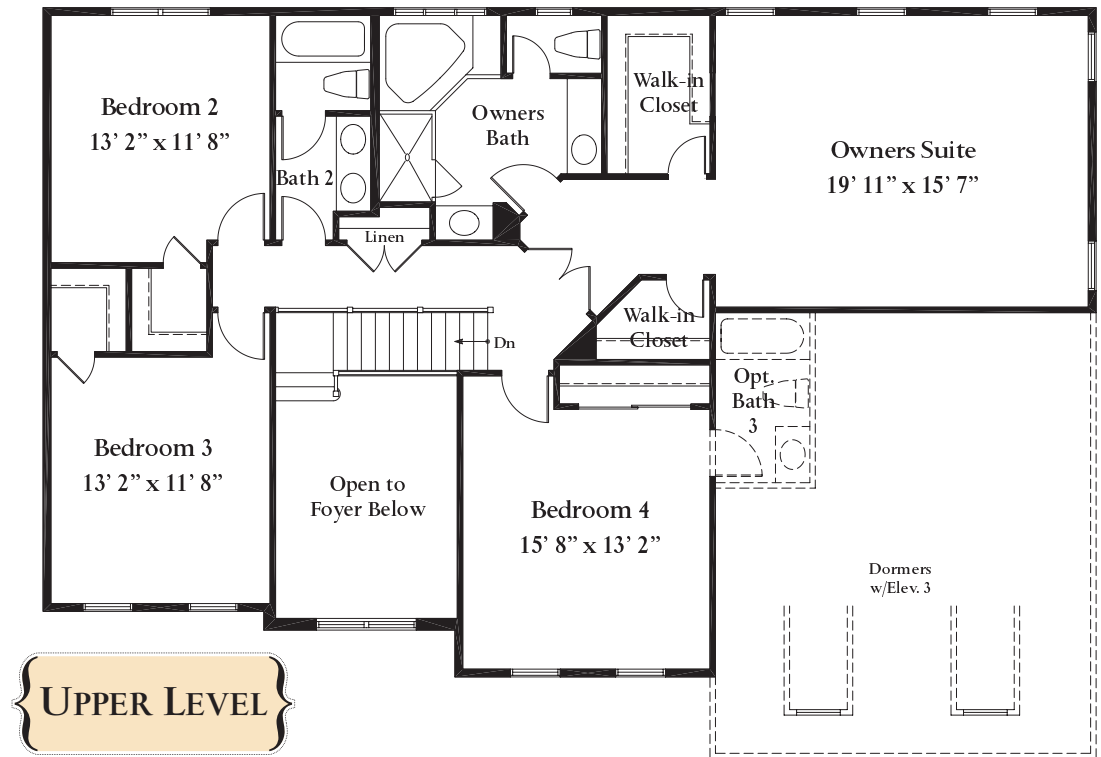
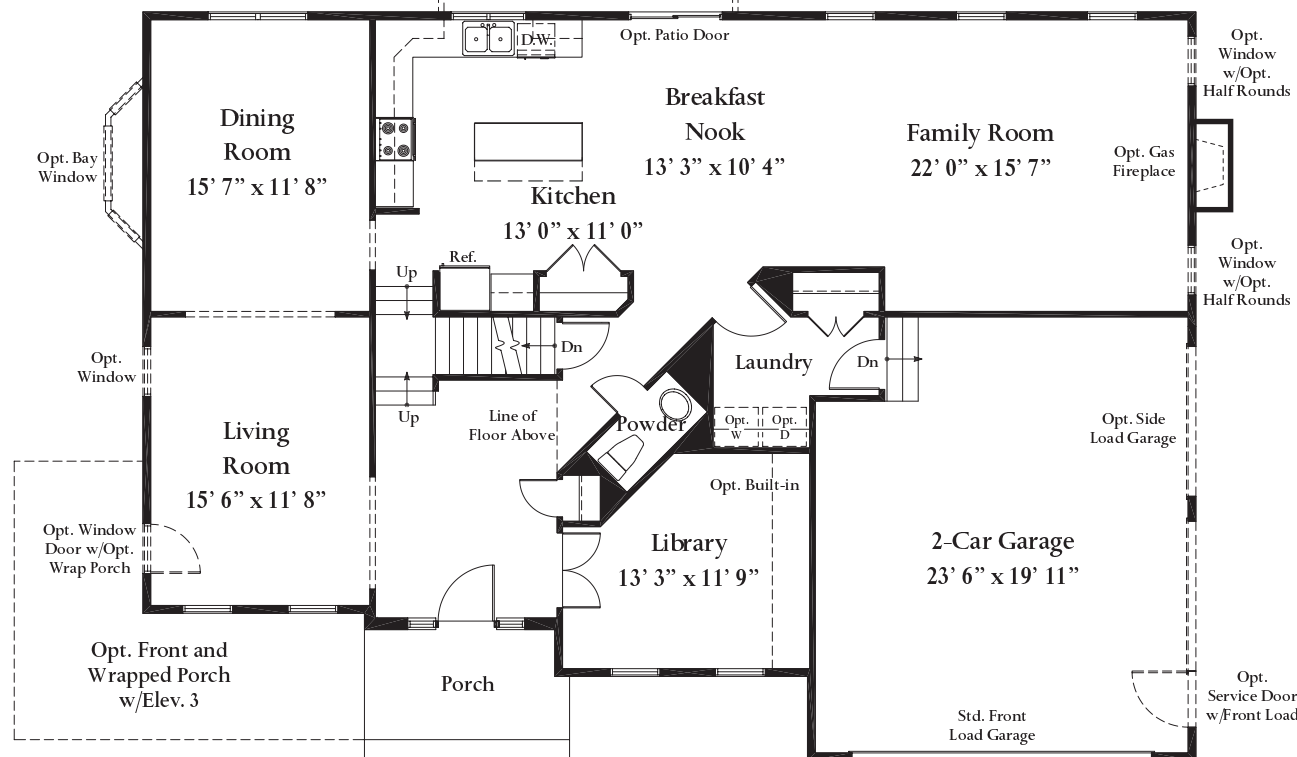
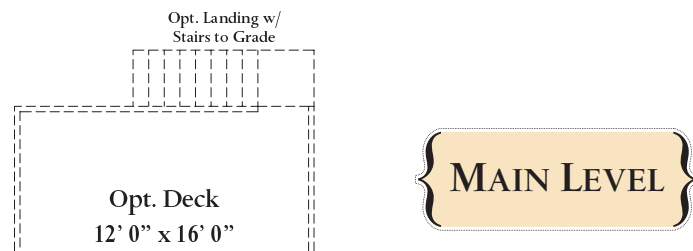


Partial main level with opt. expanded breakfast nook

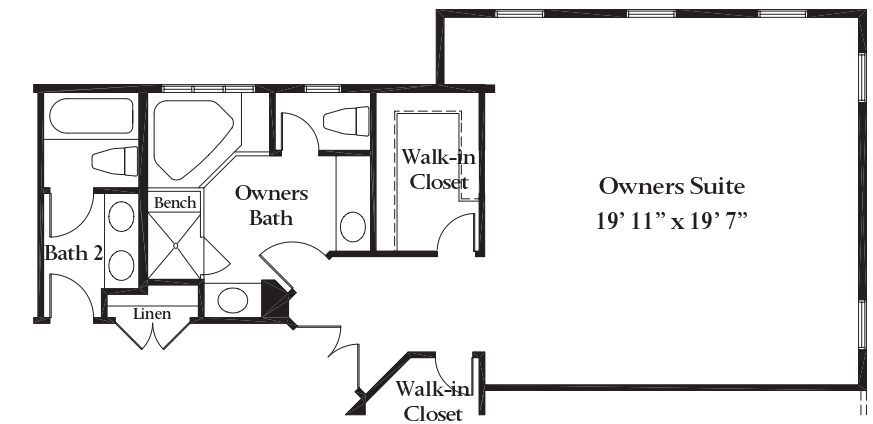
Partial main level with opt. 4' 0" family room extension



Partial main level with opt. morning room



UPPER LEVEL



Partial upper level with opt. 4' 0" family room extension