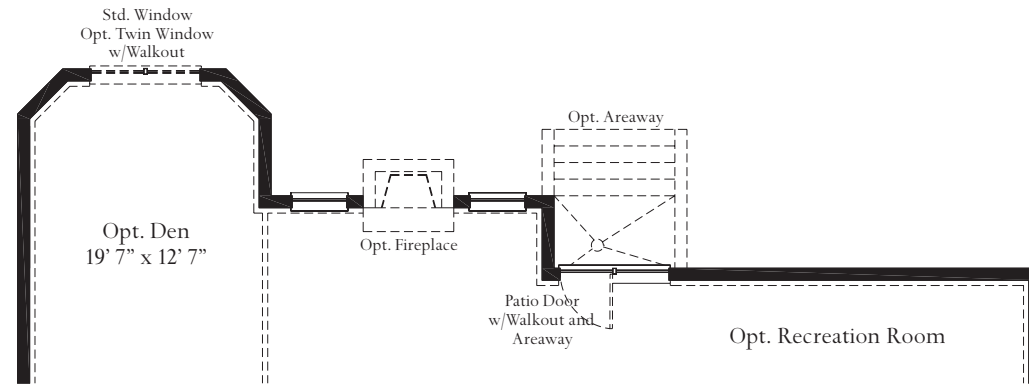
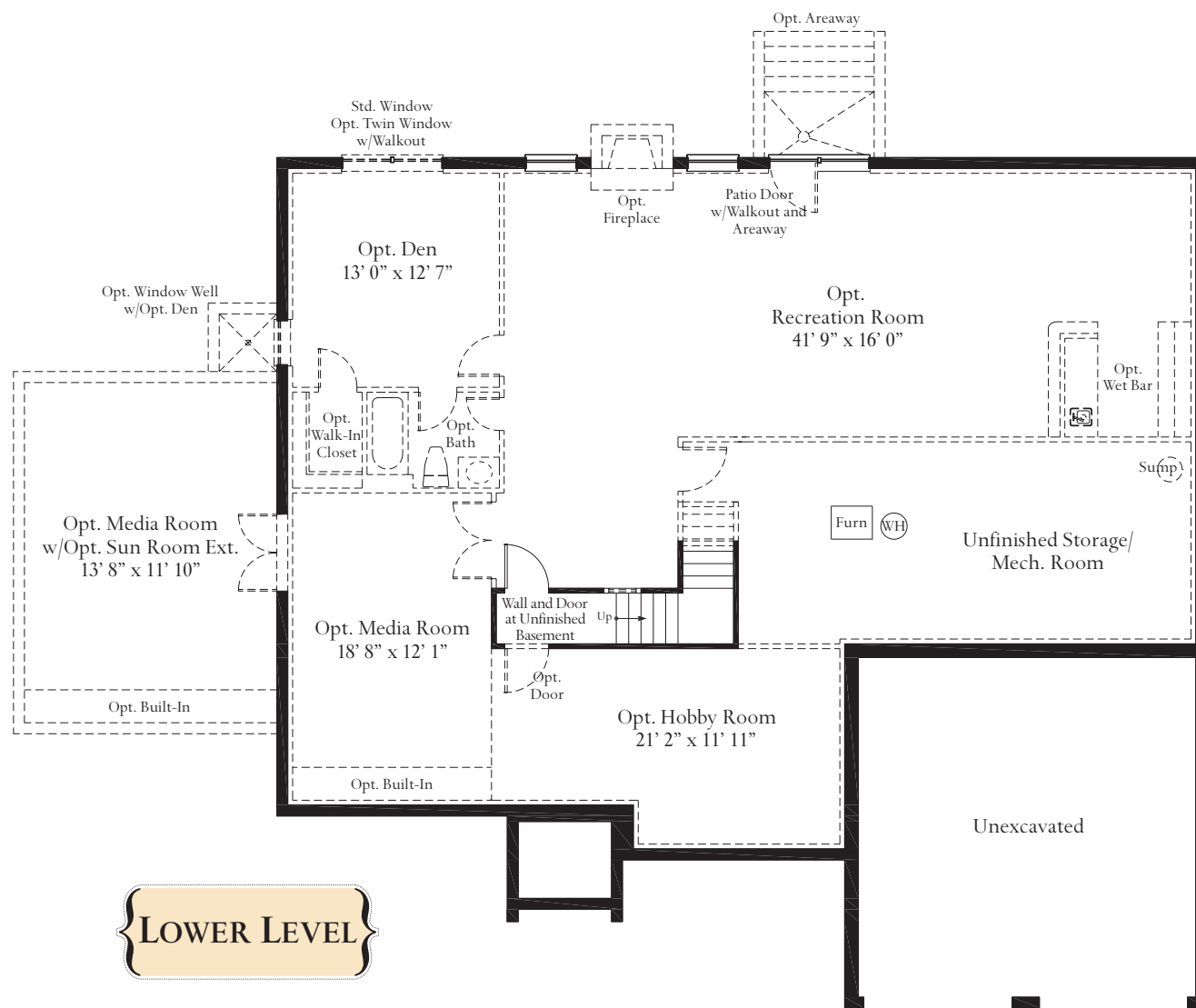


The Raleigh



Partial basement level with opt. morning room and 4' family room extension



LOWER LEVEL



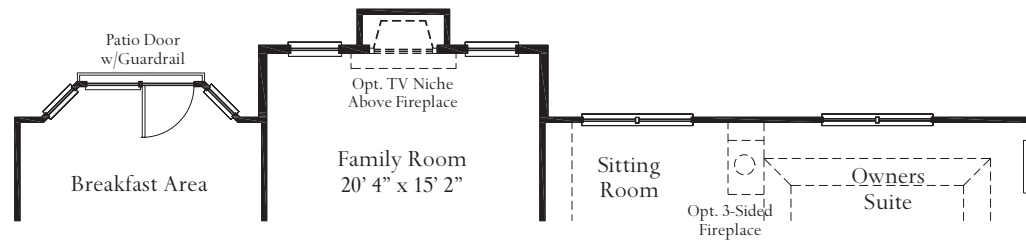
{Elevation 3}

The Raleigh's all-new design combines tradition with innovation, catering to those who desire a spacious private Owner's Suite retreat with sitting room, large walk-in closet and luxurious garden bath, all on the main level. Atlantic Builders is There For You with an elegant foyer that opens into a formal living room and dining room and features a dramatic vista all the way to the fireplace at the back of the 2-story family room. Upstairs, you will notice three additional bedrooms with two full baths and thoughtful touches including a scenic overlook into the family room below and a Technology Center for a more efficient, organized use of space. With plenty of room to grow, this flexible design can be expanded to almost double its original size.

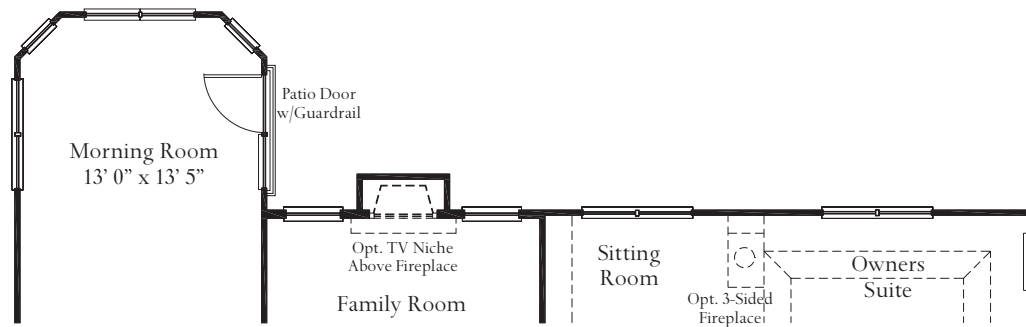
Atlantic Builders
THERE FOR YOU



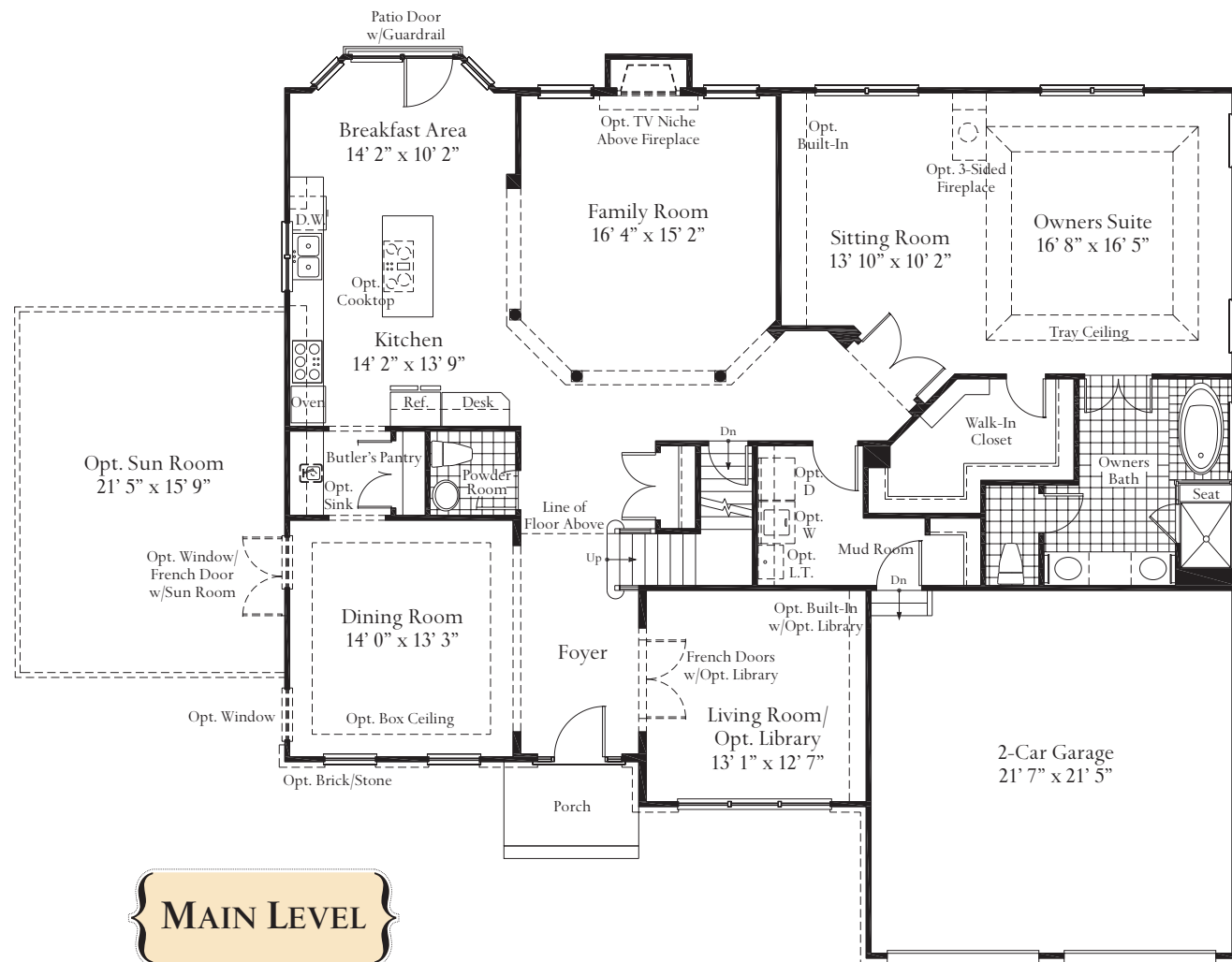
Atlantic Builders
THERE FOR YOU



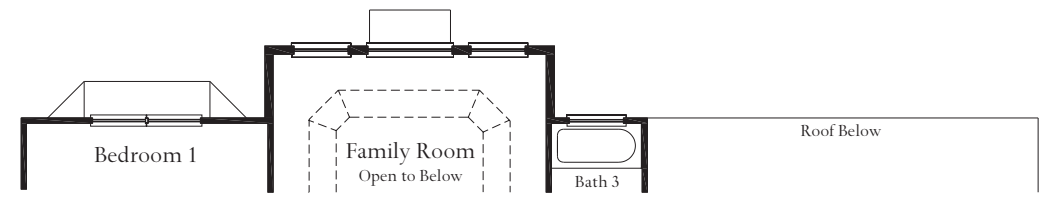
Partial main level with optional 4' family room extension



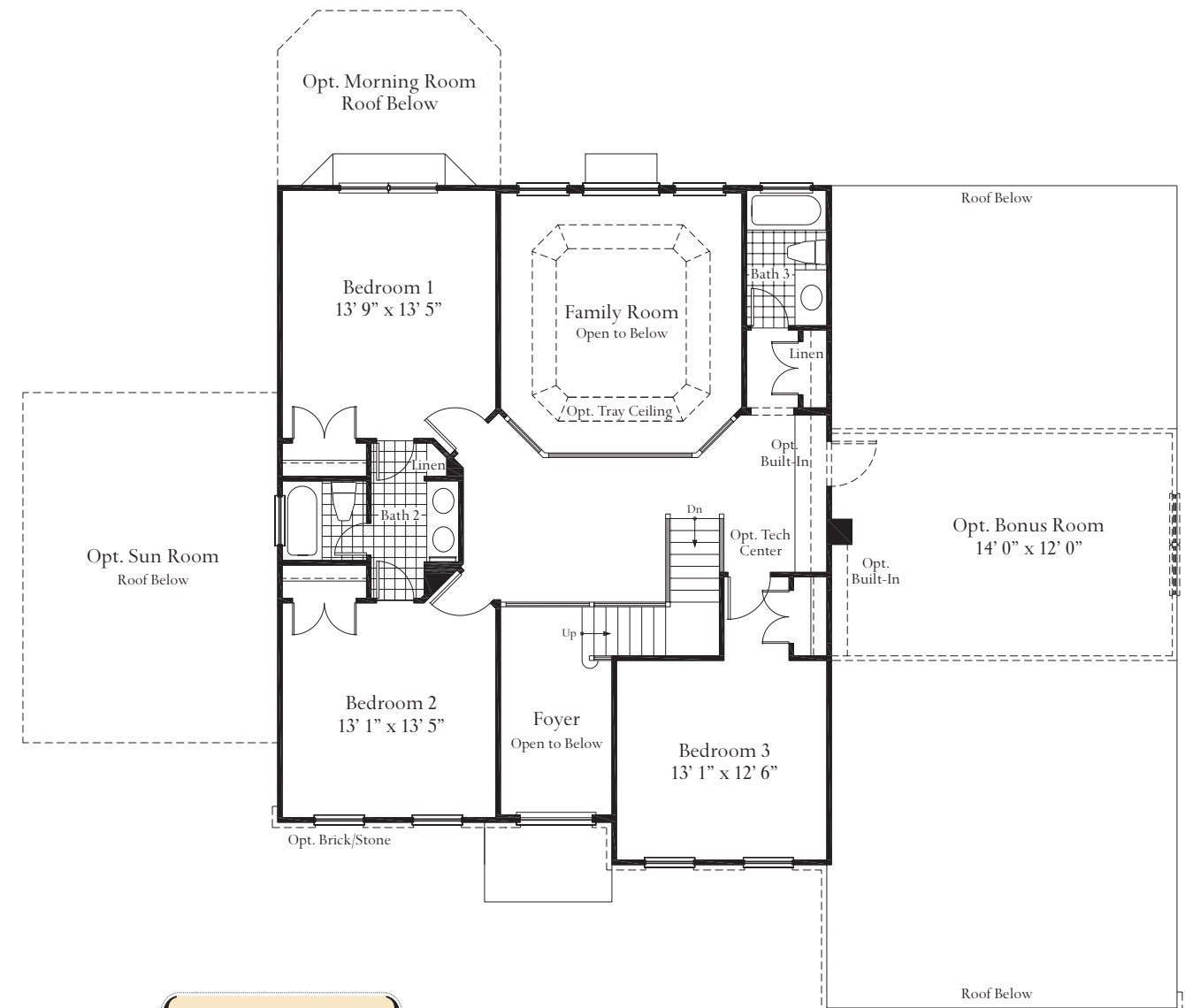
Partial main level with optional morning room



MAIN LEVEL



Partial upper level with 4' family room extension



UPPER LEVEL

These renderings and floorplans are conceptual only. Actual details may vary. This insert is for illustrative purposes only. Atlantic Builders' continuing research and development program means specifications and plans are subject to change without notice. Standard features vary per community. Please consult Community Sales Manager for details.